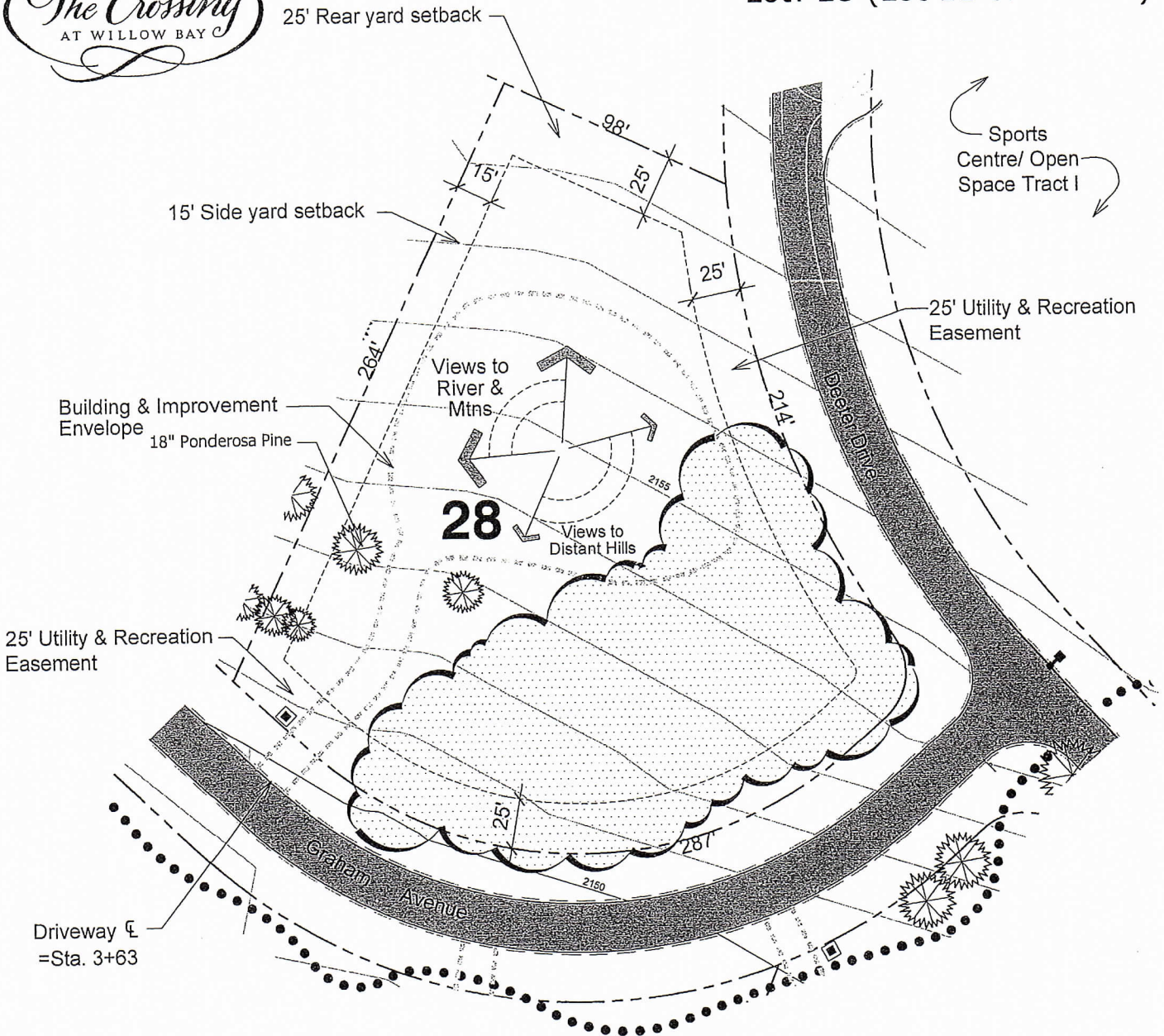




Land Development Exhibit for Lot: 28 (Lot 11 of Block 6)



Lot Area:	52,040 SF 1.19 AC
Building and Improvement Area Envelope:	14,215 SF
Estimated Finished Floor Elevation:	2156'
Average Building Envelope Slope:	3%
Lot Description: This a spectacular corner lot across the street from the sport center and open space. It offers great views to distant mountain views and probable river views from a second story.	

Notes:

1. Notable trees outside of the Building Envelope to be removed only with written permission.
2. 30% of the Building and Improvement Envelope to be open space, unless otherwise noted.
3. All structures within the building envelope to receive Design Review Committee approval prior to construction.

Legend:

- Notable Trees
- Established Vegetation
- Mixed Use Trail
- Lot Marker

*Refer to "Design and Development Guidelines"

Tree, Building, and Improvement Envelope locations may vary at the time of final design. This graphic provides general site information that is approximate without warranty, expressed, or implied. This information may be revised without notice or liability. Topographic information presented should not be relied upon for design or construction. August 31, 2006 [032855-BLOCK 6-LOT STUDYR1.DWG]

